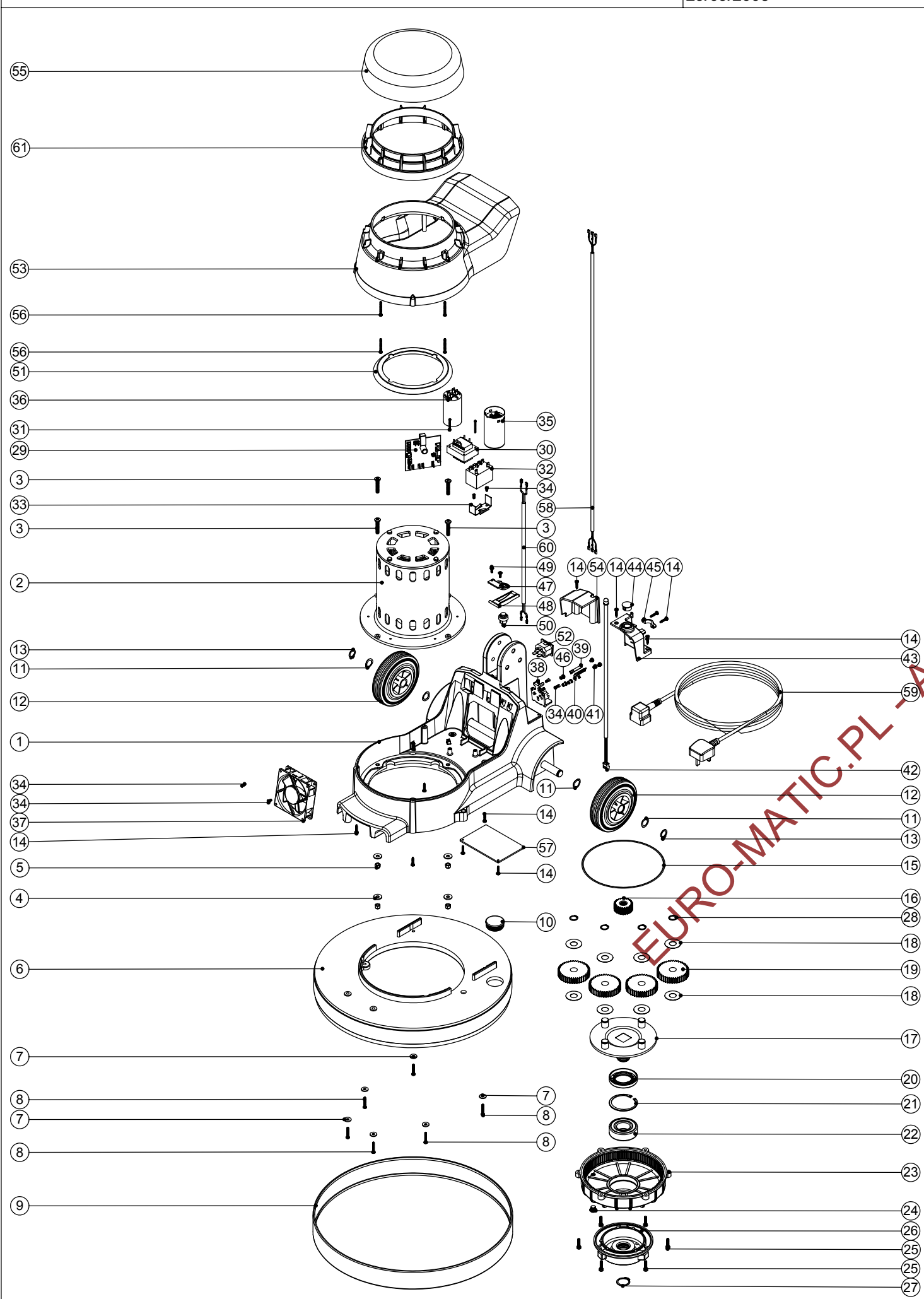


Numatic International Spare Parts
Model No: NSX-550 BASE ASSEMBLY

234214
 DRAWING:EXP-0645 ISS:A02
 29/09/2005



Numatic International Spare Parts
Model No: NSX-550 BASE ASSEMBLY

POS:	ITEM NO:	DESCRIPTION:	COMMENTS:
1	338580	PRINTED GRAPHITE BASE MOULDING SUB ASSEMBLY C/W M8 MULTISERT	
2	205189	2 POLE (HI-STACK) 230V MOTOR (P5A18323)	
3	219268	M6 X 35MM LONG POZI PAN SCREW	
4	219008	M6 FORM G WASHER	
5	219088	M6 NYLON INSERT NUT	
6	329110	GREY SANDING DECK	
7	219005	M5 FORM G WASHER	
8	219369	No8 X 1 INCH LONG POZI PAN STAINLESS STEEL PLASTITE SCREW	
9	206478	GREY MEDIUM BUFFER RING	
10	229400	BLACK END STOP	
11	219219	21.5MM X 16.3MM WAVE WASHER	
12	229060	WHEEL GREY BLACK HUB	
13	229051	EXTERNAL CIRCLIP	
14	219107	No6 X 5/8 INCH LONG POZI PAN PLASTITE SCREW	
15	230001	V OIL SEAL	
16	230040	24 TOOTH PINION GEAR (50HZ HEAVY DUTY HIGH SPEED)	
17	230300	PLANET CARRIER & PIN ASSEMBLY (50HZ EXTRA HIGH SPEED)	
18	230215	35MM X 15 I/D ALUMINIUM WASHER	
19	230014	42 TOOTH SPUR GEAR (HIGH SPEED 50HZ)	
20	230069	10MM DOUBLE LIP OIL SEAL	
21	230200	62MM INTERNAL CIRCLIP	
22	230094	62MM O/D X 30MM I/D X 20MM BEARING (WITH SEALS)	
23	230060	BOTTOM PLATE WITH MACHINED GEAR TEETH	
24	219801	GEAR BOX OIL PLUG	
25	219820	M5 X 20MM LONG SOCKET CAP SCREW	
26	230059	DIE CAST CHUCK	
27	230046	26MM EXTERNAL CIRCLIP	
28	230015	15MM EXTERNAL CIRCLIP	
29	205190	230V FLOOR MACHINE CONTROL PCB	
30	206716	TRANSFORMER	
31	219800	M3 X 30MM LONG POZI PAN SCREW	
32	220898	12V DC RELAY (C/W BRACKET)	
33	206500	RELAY BRACKET	
34	219651	M4 X 10MM LONG POZI PAN THREAD CUTTING SCREW	
35	205088	MOTOR START CAPACITOR 150MFD 280V C/W RESISTOR AND M8 STUD	
36	220876	20 MFD MOTOR RUN CAPACITOR (450V)	
37	205072	PROCESSED 12V DC BRUSHLESS FAN	
38	216288	TERMINAL BLOCK	
39	206562	CONTACT PIN	
40	206563	EARTH CONTACT PIN	
41	219090	M4 X 8MM LONG POZI PAN SEMS SCREW	
42	205124	PLUG IN LED ASSEMBLY	
43	216289	VERTICAL PLUG INPUT COVER	
44	220967	LENS COVER	
45	216290	CABLE CLAMP	
46	219009	M4 BRASS TAPPEX INSERT	
47	216293	LEVER PLATE	
48	216292	CUT OUT LEVER	
49	219677	No4 X 10MM LONG POZI PAN PLASTITE SCREW	
50	229454	HANDLE SWITCH	
51	227556	TOP MOTOR GASKET	
52	220964	APPLIANCE OUTPUT SOCKET	
56	219848	NO6 X 1 3/8 INCH LONG POZI PAN SCREW	
53	229441	FLOOR MACHINE MIDDLE SECTION MOULDING	
54	216291	OUTPUT COVER	
55	328087	PRINTED TOP SECTION MOULDING	
	236075	MAINS CABLE (15.0 METERS / 1.5MM / 3 CORE CABLE / SOCKET + EURO PLUG)	
	236081	MAINS CABLE (15.0 METERS / 1.5MM / 3 CORE CABLE / SOCKET + SOUTH AFRICAN PLUG)	
	236087	MAINS CABLE (15.0 METERS / 1.5MM / 3 CORE CABLE / SOCKET + AUSTRALIAN PLUG)	
	236078	MAINS CABLE (15.0 METERS / 1.5MM / 3 CORE CABLE / SOCKET + SWISS PLUG)	
57	329228	GAURD PLATE	
58	230085	BASE LOOM ASSEMBLY	
59	236072	MAINS CABLE (15.0 METERS / 1.5MM / 3 CORE CABLE / SOCKET + UK PLUG)	
60	230084	CUT OUT LOOM ASSEMBLY	
61	229486	TALL MOTOR INSERT MOULDING	